



£1,200 Monthly

Weave Close, Nottingham

House | 3 Bedrooms | 1 Bathroom

0115 978 9843



www.houzly.co.uk



Step Inside

Key Features

- 3 spacious bedrooms
- 1 modern bathroom
- Cosy reception room
- Charming house in Nottingham
- 861 sq ft of space
- Close to local amenities
- Near public transport links
- Ideal for families
- Quiet residential area
- Viewing recommended

Property Description

Nestled in the charming area of Weave Close, Nottingham, this delightful three-bedroom house offers a perfect blend of comfort and convenience. Spanning an impressive 861 square feet, the property features a well-appointed reception room that serves as an inviting space for relaxation and entertaining guests.

The three bedrooms provide ample accommodation, making it an ideal choice for families or those seeking extra space for a home office or guest room. The bathroom is thoughtfully designed, ensuring functionality and comfort for daily routines.

This property is situated in a friendly neighbourhood, close to local amenities, schools, and parks, making it a wonderful place to call home. With its appealing layout and practical features, this house presents an excellent opportunity for both first-time buyers and those looking to settle in a vibrant community.

We invite you to explore the potential of this lovely home in Weave Close, where comfort and convenience await.

Main Particulars

Nestled in the charming area of Weave Close, Nottingham, this delightful three-bedroom house offers a perfect blend of comfort and convenience. Spanning an impressive 861 square feet, the property features a well-appointed reception room that serves as an inviting space for relaxation and entertaining guests.

The three bedrooms provide ample accommodation, making it an ideal choice for families or those seeking extra space for a home office or guest room. The bathroom is thoughtfully designed, ensuring functionality and comfort for daily routines.

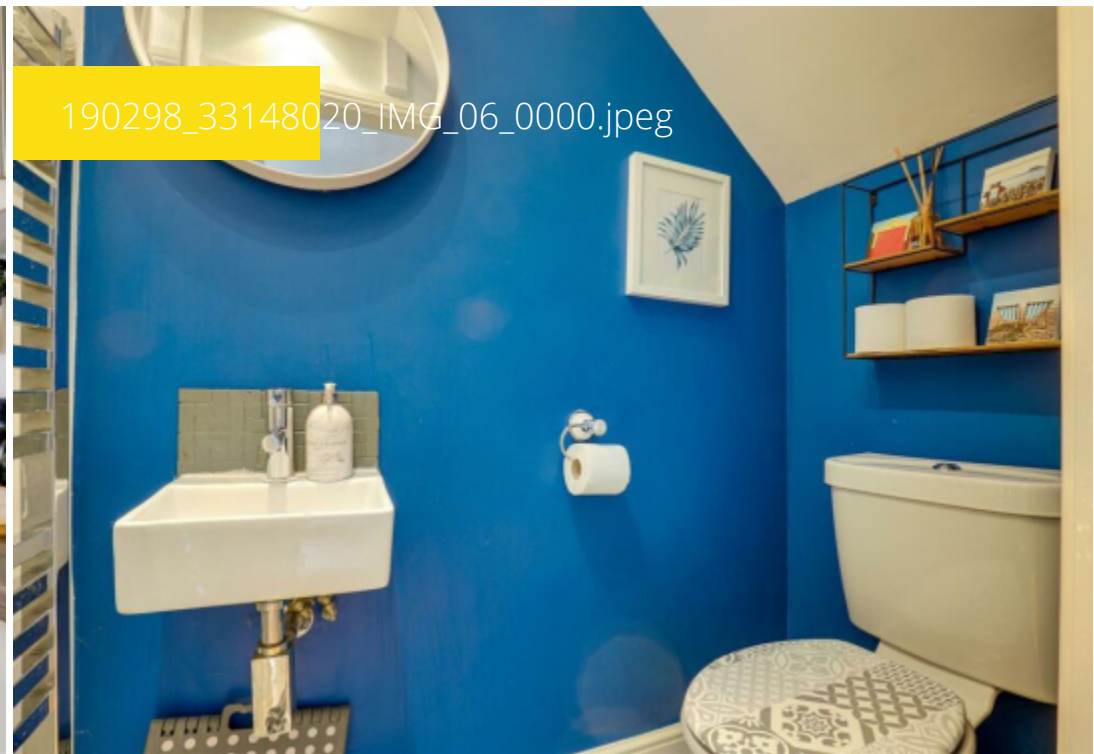
This property is situated in a friendly neighbourhood, close to local amenities, schools, and parks, making it a wonderful place to call home. With its appealing layout and practical features, this house presents an excellent opportunity for both first-time buyers and those looking to settle in a vibrant community.

We invite you to explore the potential of this lovely home in Weave Close, where comfort and convenience await.

190298_33148020_IMG_03_0000.jpeg



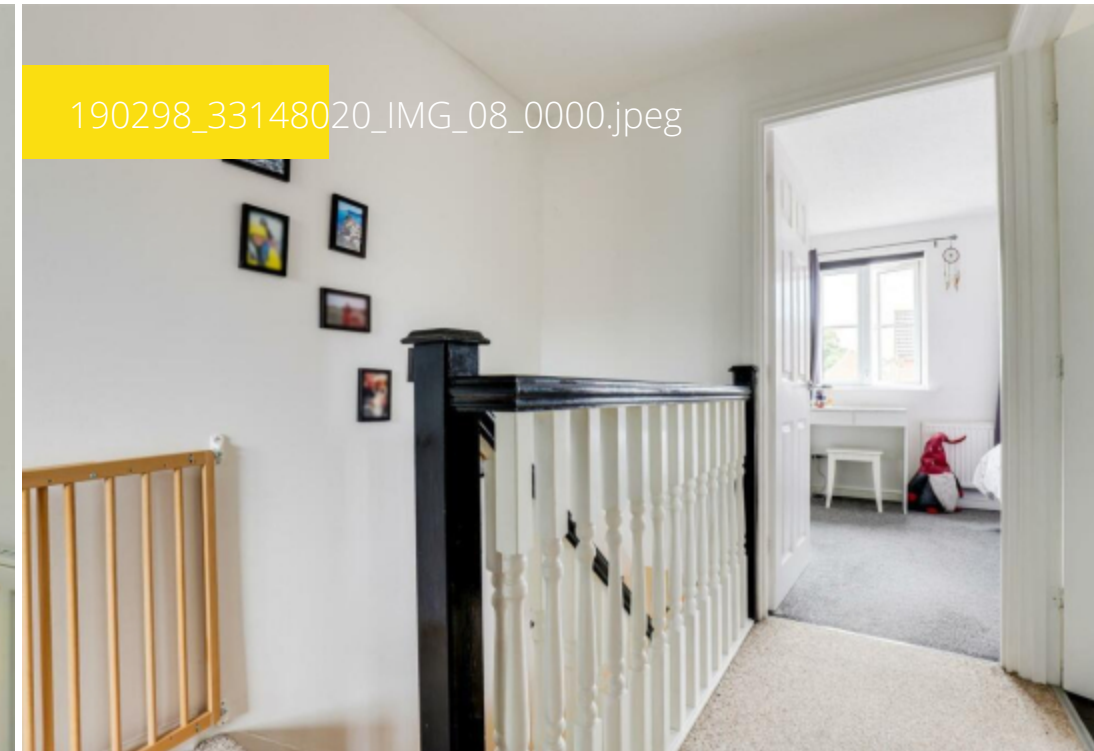
190298_33148020_IMG_06_0000.jpeg



190298_33148020_IMG_07_0000.jpeg



190298_33148020_IMG_08_0000.jpeg



Telephone: 0115 978 9843



HOUZLY
LETTINGS | MANAGEMENT

www.houzly.co.uk