



£75,000 Guide Price

Woodborough Road, Nottingham

Flat | 1 Bedroom | 1 Bathroom

0115 978 9843



www.houzly.co.uk



Step Inside

Key Features

- Investment opportunity
- Tenanted until May 2025 at £700pcm
- Popular development, 15 minute-walk to city centre
- Gated parking for 1 car included
- EPC rating C
- One bedroom apartment
- Generating a gross yield of 12%
- Open plan lounge and kitchen
- Council Tax band A

Property Description

Ideal investment opportunity. Tenanted, one bedroom apartment generating a gross yield of 12%

Furnished one double bedroom apartment in this popular development close to the city centre (only 15 minute walk).

This property has an open lounge and kitchen with all appliances, a double bedroom and a spacious shower room with modern suite.

Gated parking included behind electric gates. Additional on-street visitor parking is available.

Viewing highly recommended.

Council Tax band: A

EPC rating: C

Tenure: Leasehold

Lease length: 999 years since 1st June 2005

Service charge currently: £1,800 per annum

Ground rent: £150 per annum.

Please note all figures above have been provided by the seller. We would encourage you to have these verified by your legal adviser.

Main Particulars

Ideal investment opportunity. Tenanted, one bedroom apartment generating a gross yield of 12%

Furnished one double bedroom apartment in this popular development close to the city centre (only 15 minute walk).

This property has an open lounge and kitchen with all appliances, a double bedroom and a spacious shower room with modern suite.

Gated parking included behind electric gates. Additional on-street visitor parking is available.

Viewing highly recommended.

Council Tax band: A

EPC rating: C

Tenure: Leasehold

Lease length: 999 years since 1st June 2005

Service charge currently: £1,800 per annum

Ground rent: £150 per annum.

Please note all figures above have been provided by the seller. We would encourage you to have these verified by your legal adviser.

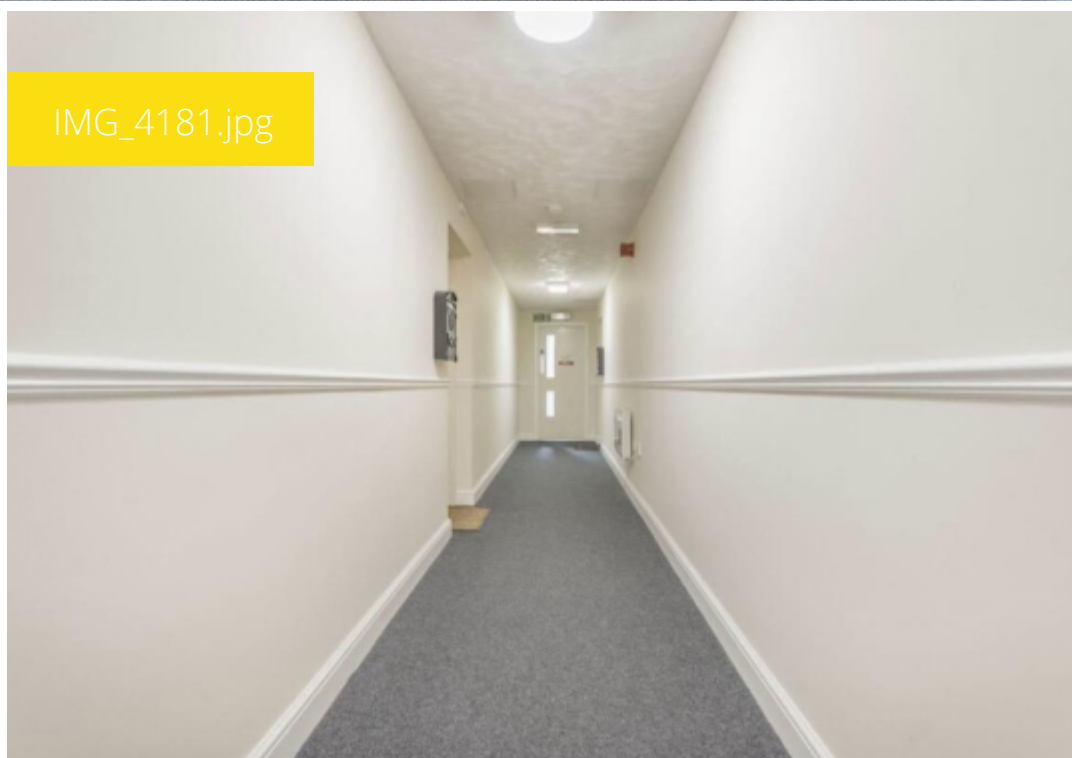
IMG_4183.jpg



IMG_4182.jpg



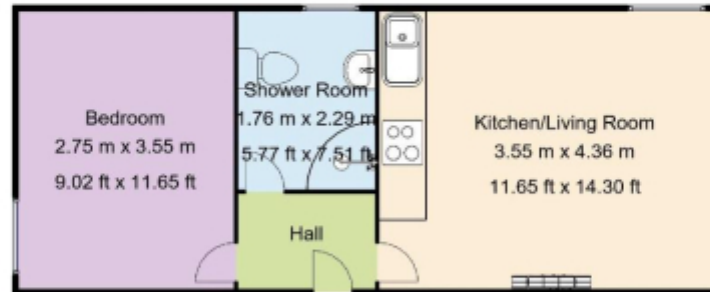
IMG_4181.jpg



IMG_4180.jpg



Ground Floor
33sq.m / 357.51sq.ft
Approx.



This floorplan is for illustrative purposes only and the location of doors, windows and other items are approximate.

Agents notes: All measurements are approximate and for general guidance only and whilst every attempt has been made to ensure accuracy, they must not be relied on. The fixtures, fittings and appliances referred to have not been tested and therefore no guarantee can be given that they are in working order. Internal photographs are reproduced for general information and it must not be inferred that any item shown is included with the property. Copyright © 2026 13581735 Registered Office: , 363 Nuthall Road, Nottingham NG8 5BU

Telephone: 0115 978 9843



www.houzly.co.uk