



£1,100 Monthly

Alfreton Road, Nottingham

Flat | 2 Bedrooms

0115 978 9843



www.houzly.co.uk



Step Inside

Key Features

- Spacious 2-bedroom flat
- Located on Alfreton Road
- Modern flat in Nottingham
- 818 sq ft of living space
- Close to local amenities
- Easy access to transport links
- Ideal for small families
- Perfect for professionals
- Bright and airy interior
- Viewing highly recommended

Property Description

Nestled on the vibrant Alfreton Road in Nottingham, this charming flat offers a delightful blend of comfort and convenience. Spanning an impressive 818 square feet, the property features two well-proportioned bedrooms, making it an ideal choice for couples, small families, or individuals seeking extra space. The flat is designed to maximise natural light, creating a warm and inviting atmosphere throughout. The layout is both practical and appealing, ensuring that every corner of the home is utilised effectively. The living area provides a perfect setting for relaxation or entertaining guests, while the bedrooms offer a peaceful retreat at the end of the day. Situated in a lively area, residents will benefit from easy access to local amenities, including shops, cafes, and parks, all within a short distance. The excellent transport links nearby make commuting to the city centre and beyond a breeze, enhancing the appeal of this property for those who work or study in Nottingham. This flat presents a wonderful opportunity for anyone looking to enjoy modern living in a sought-after location. With its spacious layout and prime position, it is sure to attract interest from a variety of potential buyers or renters. Do not miss the chance to make this delightful flat your new home.

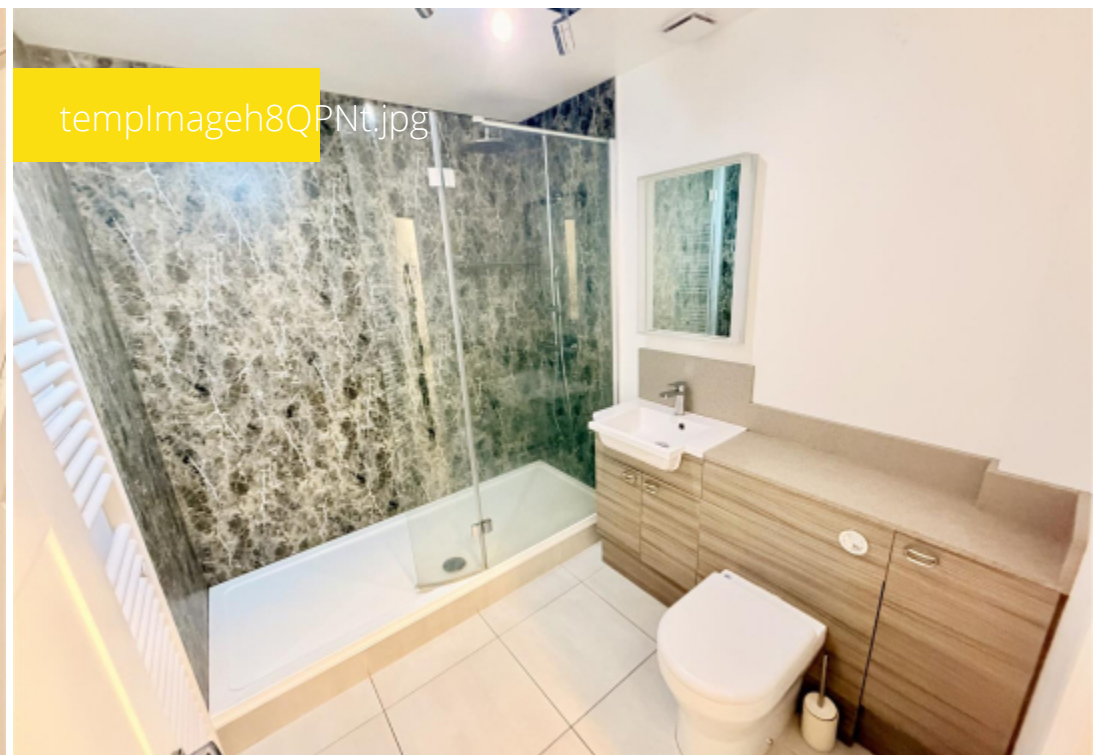
Main Particulars

Nestled on the vibrant Alfreton Road in Nottingham, this charming flat offers a delightful blend of comfort and convenience. Spanning an impressive 818 square feet, the property features two well-proportioned bedrooms, making it an ideal choice for couples, small families, or individuals seeking extra space. The flat is designed to maximise natural light, creating a warm and inviting atmosphere throughout. The layout is both practical and appealing, ensuring that every corner of the home is utilised effectively. The living area provides a perfect setting for relaxation or entertaining guests, while the bedrooms offer a peaceful retreat at the end of the day. Situated in a lively area, residents will benefit from easy access to local amenities, including shops, cafes, and parks, all within a short distance. The excellent transport links nearby make commuting to the city centre and beyond a breeze, enhancing the appeal of this property for those who work or study in Nottingham. This flat presents a wonderful opportunity for anyone looking to enjoy modern living in a sought-after location. With its spacious layout and prime position, it is sure to attract interest from a variety of potential buyers or renters. Do not miss the chance to make this delightful flat your new home.

templImagesCpt7n.jpg



templImageh8QPnt.jpg



templImage0JSAE7.jpg



templImage8PSGLR.jpg



Telephone: 0115 978 9843



www.houzly.co.uk