



£950 Monthly

Webster Street, Derby

Terraced House | 3 Bedrooms | 1 Bathroom

0115 978 9843



www.houzly.co.uk



Step Inside

Key Features

- 2 cosy reception rooms
- 3 bedrooms
- 1 modern bathroom
- Mid-terrace house
- Located on Webster Street
- 1,001 sq ft of space
- Close to Derby amenities
- Ideal for small families
- Great transport links
- Viewing recommended

Property Description

Located on the well-connected Webster Street in Derby, this well-maintained three-bedroom mid-terrace home offers generous accommodation arranged over two floors, making it well suited to families, professionals, or sharers. The property opens into a spacious reception room with neutral décor and good natural light. To the rear is a fitted kitchen providing ample storage and worktop space, suitable for everyday use and dining, with access leading out to the rear of the property. Upstairs, there are three well-proportioned bedrooms, including a good-sized main bedroom, along with two additional rooms ideal as bedrooms, a home office, or dressing room. The accommodation is completed by a modern family bathroom. Externally, the property benefits from an enclosed rear garden, offering a low-maintenance outdoor space for relaxing or entertaining. Conveniently positioned within easy reach of local amenities, public transport links, and Derby city centre, this property provides practical and comfortable living in a popular residential location.

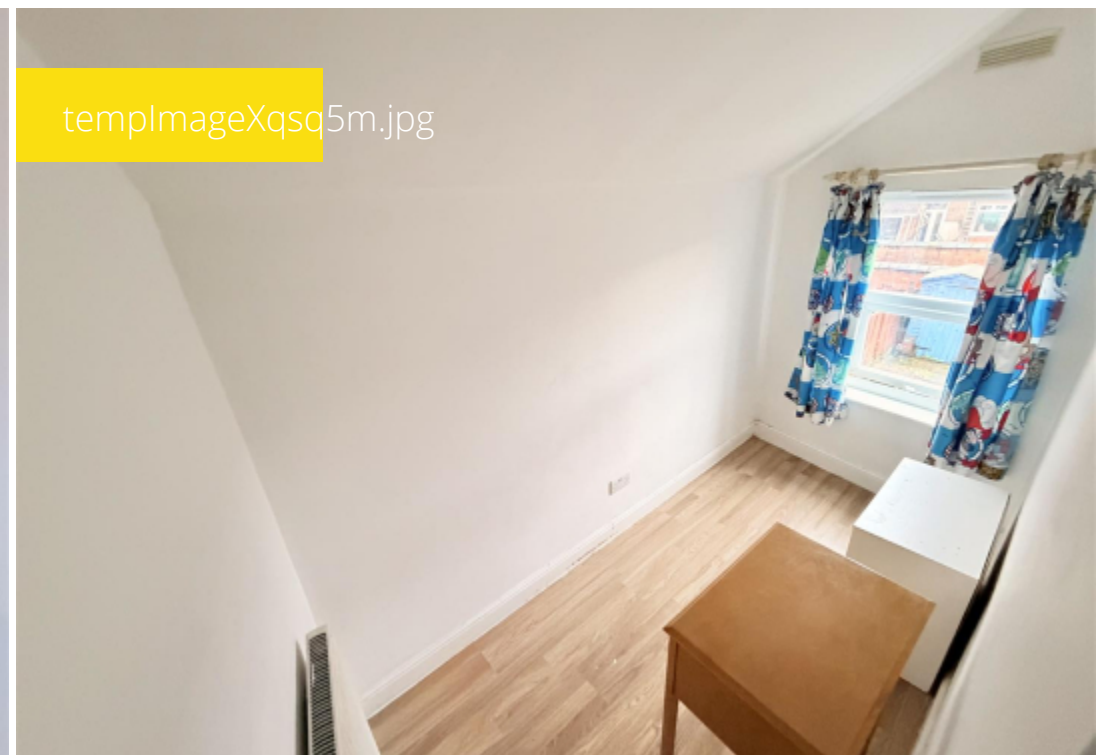
Main Particulars

Located on the well-connected Webster Street in Derby, this well-maintained three-bedroom mid-terrace home offers generous accommodation arranged over two floors, making it well suited to families, professionals, or sharers. The property opens into a spacious reception room with neutral décor and good natural light. To the rear is a fitted kitchen providing ample storage and worktop space, suitable for everyday use and dining, with access leading out to the rear of the property. Upstairs, there are three well-proportioned bedrooms, including a good-sized main bedroom, along with two additional rooms ideal as bedrooms, a home office, or dressing room. The accommodation is completed by a modern family bathroom. Externally, the property benefits from an enclosed rear garden, offering a low-maintenance outdoor space for relaxing or entertaining. Conveniently positioned within easy reach of local amenities, public transport links, and Derby city centre, this property provides practical and comfortable living in a popular residential location.

templImage0WuOKv.jpg



templImageXqsg5m.jpg



templImageVAolJD.jpg



templImageXbeLRy.jpg



Telephone: 0115 978 9843



www.houzly.co.uk