



£1,450 Monthly

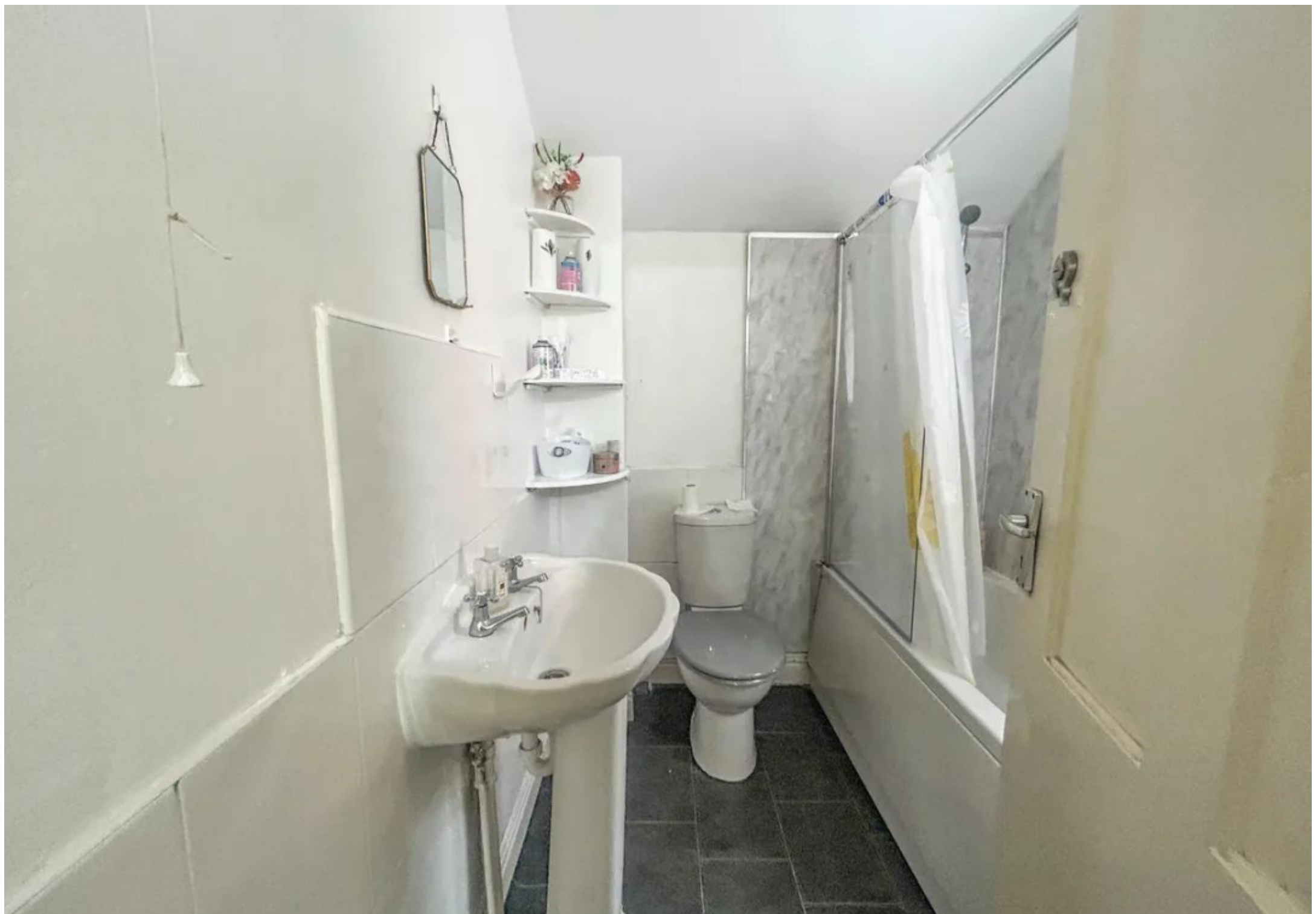
Broxtowe Street, Nottingham

Terraced House | 5 Bedrooms | 2 Bathrooms

0115 978 9843



[www.houzly.co.uk](http://www.houzly.co.uk)



# Step Inside

---

## Key Features

- 5 spacious bedrooms
- 2 modern bathrooms
- Cosy reception room
- Terraced house style
- Located on Broxtowe Street
- Close to local amenities
- Easy access to transport
- Ideal family home
- Viewing recommended
- 1,238 sq ft space

## Property Description

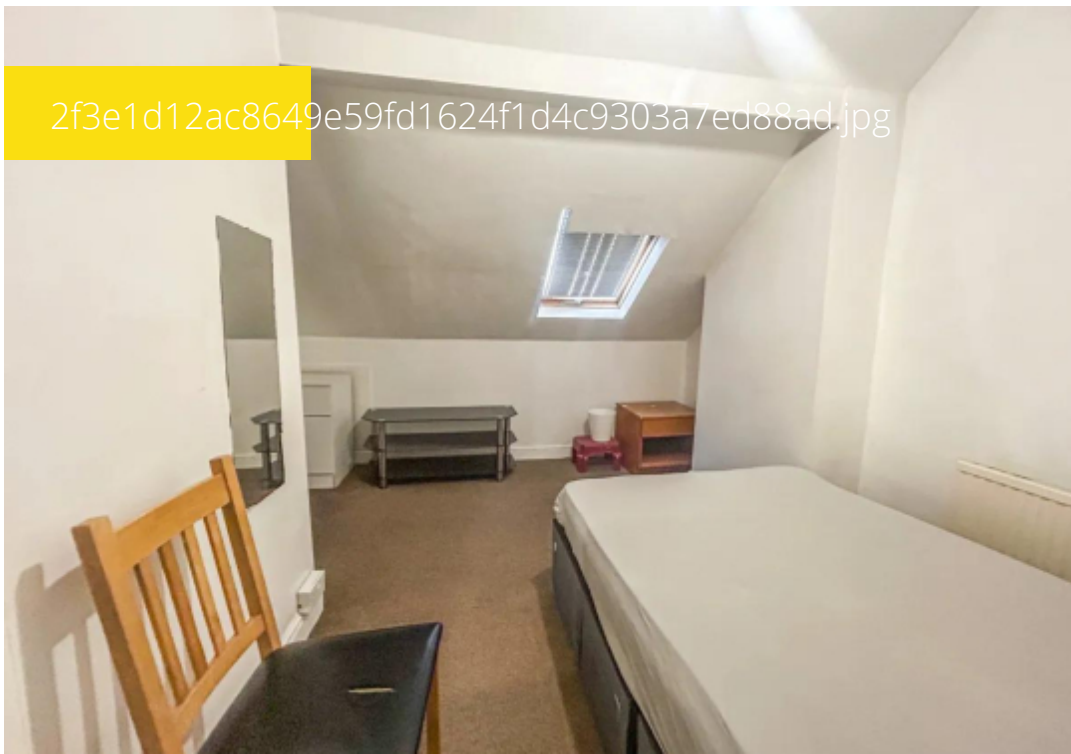
Nestled in the charming area of Broxtowe Street, Nottingham, this delightful terraced house offers a perfect blend of space and comfort. With a generous 1,238 square feet of living space, this property is ideal for families or those seeking ample room to entertain. The house features a welcoming reception room that serves as a perfect gathering space for family and friends. With five well-proportioned bedrooms, there is plenty of room for everyone to enjoy their own private sanctuary. The two bathrooms provide convenience and ease for busy mornings or relaxing evenings. The location on Broxtowe Street is particularly appealing, offering a friendly neighbourhood atmosphere while being conveniently close to local amenities, schools, and transport links. This makes it an excellent choice for those who appreciate both community and accessibility. This property presents a wonderful opportunity for anyone looking to settle in Nottingham, combining spacious living with a prime location. Whether you are a growing family or simply in need of more space, this terraced house is sure to meet your needs and exceed your expectations.

## Main Particulars

Nestled in the charming area of Broxtowe Street, Nottingham, this delightful terraced house offers a perfect blend of space and comfort. With a generous 1,238 square feet of living space, this property is ideal for families or those seeking ample room to entertain. The house features a welcoming reception room that serves as a perfect gathering space for family and friends. With five well-proportioned bedrooms, there is plenty of room for everyone to enjoy their own private sanctuary. The two bathrooms provide convenience and ease for busy mornings or relaxing evenings. The location on Broxtowe Street is particularly appealing, offering a friendly neighbourhood atmosphere while being conveniently close to local amenities, schools, and transport links. This makes it an excellent choice for those who appreciate both community and accessibility. This property presents a wonderful opportunity for anyone looking to settle in Nottingham, combining spacious living with a prime location. Whether you are a growing family or simply in need of more space, this terraced house is sure to meet your needs and exceed your expectations.



2f3e1d12ac8649e59fd1624f1d4c9303a7ed88ad.jpg



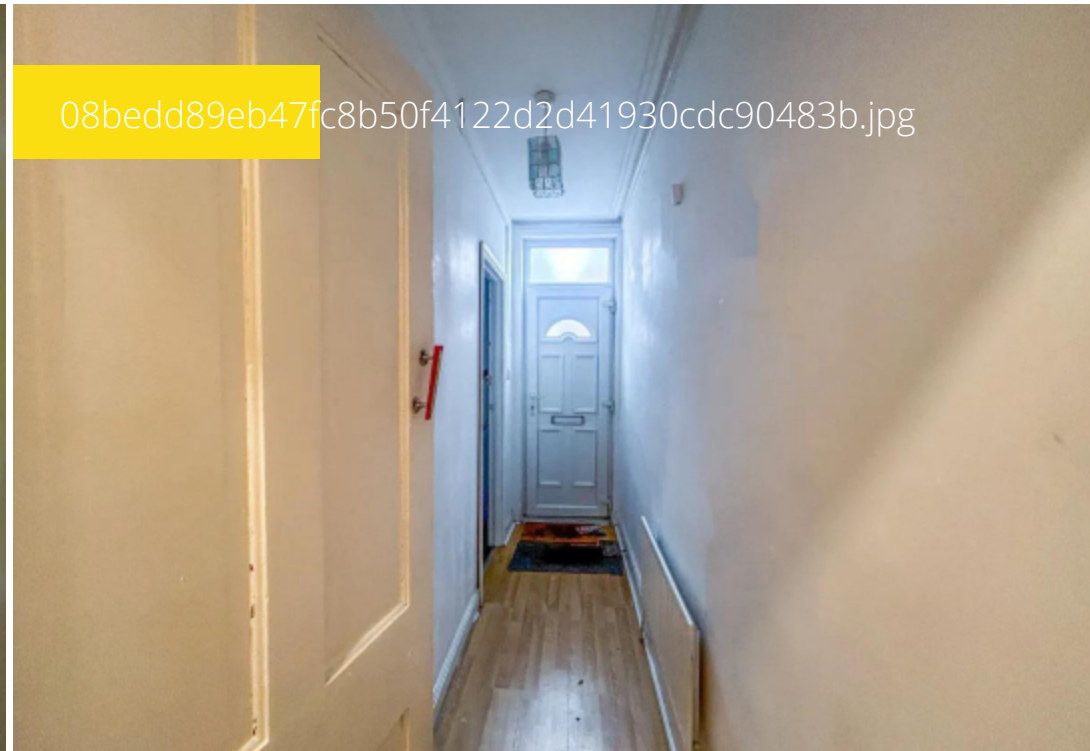
4c67b452db11e477da5da12abeaea0da34c797d7.jpg



8a0f5c7ed6158a208b25ee379c2cdd44ac5fe7b2.jpg



08bedd89eb47fc8b50f4122d2d41930cdc90483b.jpg



Telephone: 0115 978 9843



---

[www.houzly.co.uk](http://www.houzly.co.uk)