



£1,200 Monthly

Reydon Drive, Nottingham

Semi-Detached House | 3 Bedrooms | 1 Bathroom

0115 978 9843



[www.houzly.co.uk](http://www.houzly.co.uk)



# Step Inside

---

## Key Features

- 3 cosy bedrooms
- 1 modern bathroom
- Spacious reception room
- End terrace house
- Built in 1940
- Located on Reydon Drive
- Close to Nottingham amenities
- 818 sq ft of space
- Ideal for families
- Viewing recommended

## Property Description

Nestled in the charming area of Reydon Drive, Nottingham, this delightful end-terrace house offers a perfect blend of comfort and convenience. Built in 1940, the property boasts a characterful charm that is sure to appeal to a variety of buyers. Spanning an impressive 818 square feet, this home features three well-proportioned bedrooms, making it ideal for families or those seeking extra space.

Upon entering, you are welcomed into a spacious reception room that provides a warm and inviting atmosphere, perfect for both relaxation and entertaining. The layout of the house is practical, ensuring that every inch of space is utilised effectively. The single bathroom is conveniently located, catering to the needs of the household.

The property is situated in a friendly neighbourhood, offering a sense of community while still being close to local amenities, schools, and parks. This makes it an excellent choice for families or anyone looking to enjoy the vibrant lifestyle that Nottingham has to offer.

With its classic design and ample living space, this end-terrace house on Reydon Drive presents a wonderful opportunity for those looking to make a house their home. Whether you are a first-time buyer or seeking a new family residence, this property is well worth a visit.

## Main Particulars

Nestled in the charming area of Reydon Drive, Nottingham, this delightful end-terrace house offers a perfect blend of comfort and convenience. Built in 1940, the property boasts a characterful charm that is sure to appeal to a variety of buyers. Spanning an impressive 818 square feet, this home features three well-proportioned bedrooms, making it ideal for families or those seeking extra space.

Upon entering, you are welcomed into a spacious reception room that provides a warm and inviting atmosphere, perfect for both relaxation and entertaining. The layout of the house is practical, ensuring that every inch of space is utilised effectively. The single bathroom is conveniently located, catering to the needs of the household.

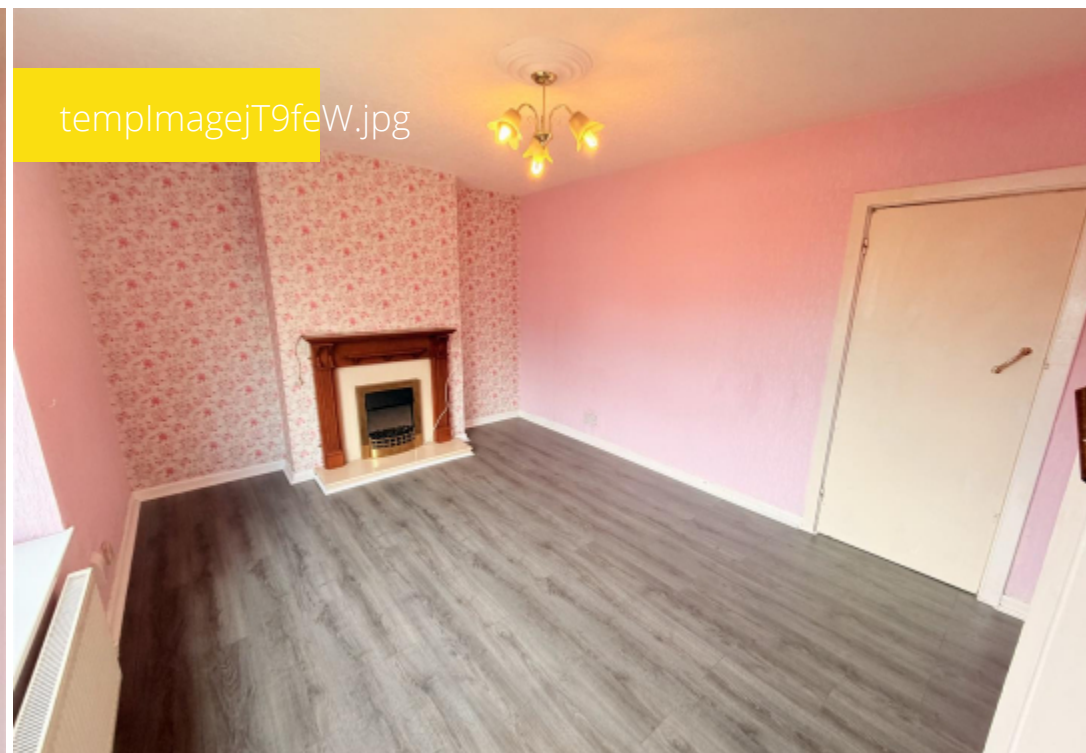
The property is situated in a friendly neighbourhood, offering a sense of community while still being close to local amenities, schools, and parks. This makes it an excellent choice for families or anyone looking to enjoy the vibrant lifestyle that Nottingham has to offer.

With its classic design and ample living space, this end-terrace house on Reydon Drive presents a wonderful opportunity for those looking to make a house their home. Whether you are a first-time buyer or seeking a new family residence, this property is well worth a visit.

templImageTzVa0b.jpg



templImagejT9feW.jpg



templImage0Wlgfj.jpg



templImagebMAehA.jpg



Telephone: 0115 978 9843



**HOUZLY**  
LETTINGS | MANAGEMENT

---

[www.houzly.co.uk](http://www.houzly.co.uk)