



£1,050 Monthly

Bakewell Street, Derby

Terraced House | 2 Bedrooms | 2 Bathrooms

0115 978 9843



www.houzly.co.uk



Step Inside

Key Features

- 2 cosy reception rooms
- 2 spacious bedrooms
- 2 modern bathrooms
- Mid-terrace house
- 764 sq ft living space
- Built in 1900
- Located on Bakewell Street
- Close to Derby amenities
- Ideal for small families
- Viewing recommended

Property Description

Nestled in the charming area of Bakewell Street, Derby, this delightful mid-terrace house offers a perfect blend of character and modern living. Built in 1900, the property boasts a rich history while providing all the comforts of contemporary life. Spanning an impressive 764 square feet, this home features two spacious reception rooms, ideal for entertaining guests or enjoying quiet evenings with family.

The property comprises two well-appointed bedrooms, providing ample space for relaxation and rest. With two bathrooms, convenience is at the forefront, ensuring that morning routines and evening unwinding can be done with ease.

The location is particularly appealing, offering a sense of community while being close to local amenities, parks, and transport links. This home is perfect for first-time buyers, small families, or those looking to downsize without compromising on space or comfort.

With its charming features and practical layout, this mid-terrace house on Bakewell Street is a wonderful opportunity for anyone seeking a lovely home in Derby. Don't miss the chance to make this property your own.

Main Particulars

Nestled in the charming area of Bakewell Street, Derby, this delightful mid-terrace house offers a perfect blend of character and modern living. Built in 1900, the property boasts a rich history while providing all the comforts of contemporary life. Spanning an impressive 764 square feet, this home features two spacious reception rooms, ideal for entertaining guests or enjoying quiet evenings with family.

The property comprises two well-appointed bedrooms, providing ample space for relaxation and rest. With two bathrooms, convenience is at the forefront, ensuring that morning routines and evening unwinding can be done with ease.

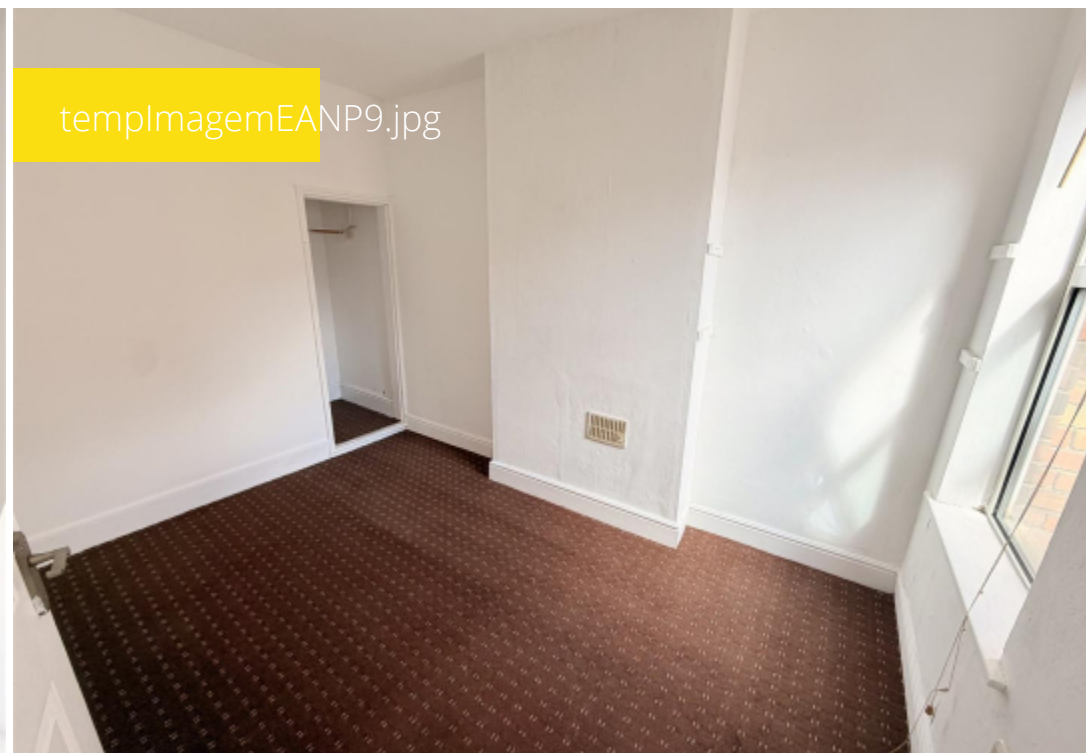
The location is particularly appealing, offering a sense of community while being close to local amenities, parks, and transport links. This home is perfect for first-time buyers, small families, or those looking to downsize without compromising on space or comfort.

With its charming features and practical layout, this mid-terrace house on Bakewell Street is a wonderful opportunity for anyone seeking a lovely home in Derby. Don't miss the chance to make this property your own.

templImagew4aihp.jpg



templImageEANP9.jpg



templImageBbMaep.jpg



templImageR2XUOH.jpg



Telephone: 0115 978 9843



HOUZLY
LETTINGS | MANAGEMENT

www.houzly.co.uk