



£1,250 Monthly

Wilsthorpe Road, Long Eaton, Nottingham

End of Terrace | 3 Bedrooms | 1 Bathroom

0115 978 9843



www.houzly.co.uk



Step Inside

Key Features

- 3 spacious bedrooms
- 1 modern bathroom
- 2 cosy reception rooms
- End terrace house
- Located in Long Eaton
- Close to local amenities
- Near public transport
- 1,130 sq ft of space
- Ideal family home
- Viewing recommended

Property Description

Nestled on the charming Wilsthorpe Road in Long Eaton, Nottingham, this delightful end-terrace house offers a perfect blend of comfort and convenience. Spanning an impressive 1,130 square feet, the property boasts two inviting reception rooms, ideal for both relaxation and entertaining guests. The home features three well-proportioned bedrooms, providing ample space for families or those seeking a home office. The single bathroom is thoughtfully designed, catering to the needs of modern living. With its appealing layout and generous living space, this property presents an excellent opportunity for anyone looking to settle in a vibrant community. Long Eaton is known for its friendly atmosphere and excellent local amenities, making it a desirable location for families and professionals alike. This end-terrace house is not just a place to live; it is a place to create lasting memories. Whether you are a first-time buyer or looking to invest, this property is sure to impress. Do not miss the chance to make this lovely house your new home.

Main Particulars

Nestled on the charming Wilsthorpe Road in Long Eaton, Nottingham, this delightful end-terrace house offers a perfect blend of comfort and convenience. Spanning an impressive 1,130 square feet, the property boasts two inviting reception rooms, ideal for both relaxation and entertaining guests. The home features three well-proportioned bedrooms, providing ample space for families or those seeking a home office. The single bathroom is thoughtfully designed, catering to the needs of modern living. With its appealing layout and generous living space, this property presents an excellent opportunity for anyone looking to settle in a vibrant community. Long Eaton is known for its friendly atmosphere and excellent local amenities, making it a desirable location for families and professionals alike. This end-terrace house is not just a place to live; it is a place to create lasting memories. Whether you are a first-time buyer or looking to invest, this property is sure to impress. Do not miss the chance to make this lovely house your new home.

Bedroom



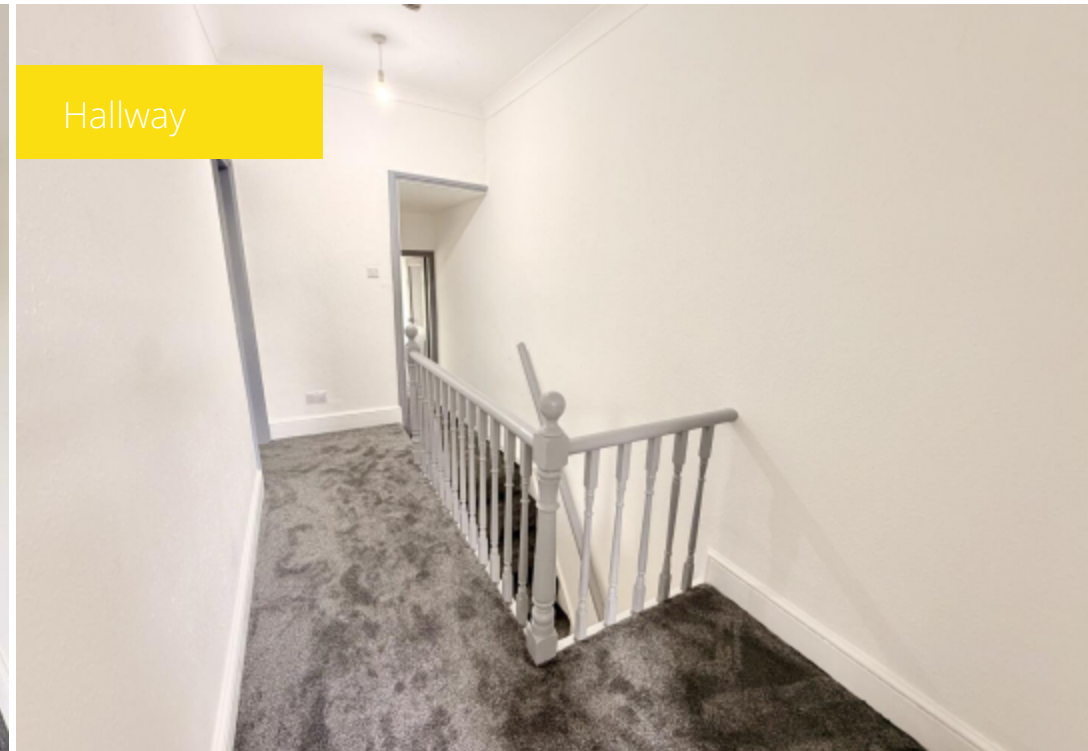
Bathroom



Bedroom 1



Hallway



Telephone: 0115 978 9843



HOUZLY
LETTINGS | MANAGEMENT

www.houzly.co.uk